

Supplement of Atmos. Meas. Tech., 12, 1123–1139, 2019
<https://doi.org/10.5194/amt-12-1123-2019-supplement>
© Author(s) 2019. This work is distributed under
the Creative Commons Attribution 4.0 License.



Supplement of

An improved method for mobile characterisation of $\delta^{13}\text{CH}_4$ source signatures and its application in Germany

Antje Hoheisel et al.

Correspondence to: Antje Hoheisel (antje.hoheisel@iup.uni-heidelberg.de)

The copyright of individual parts of the supplement might differ from the CC BY 4.0 License.

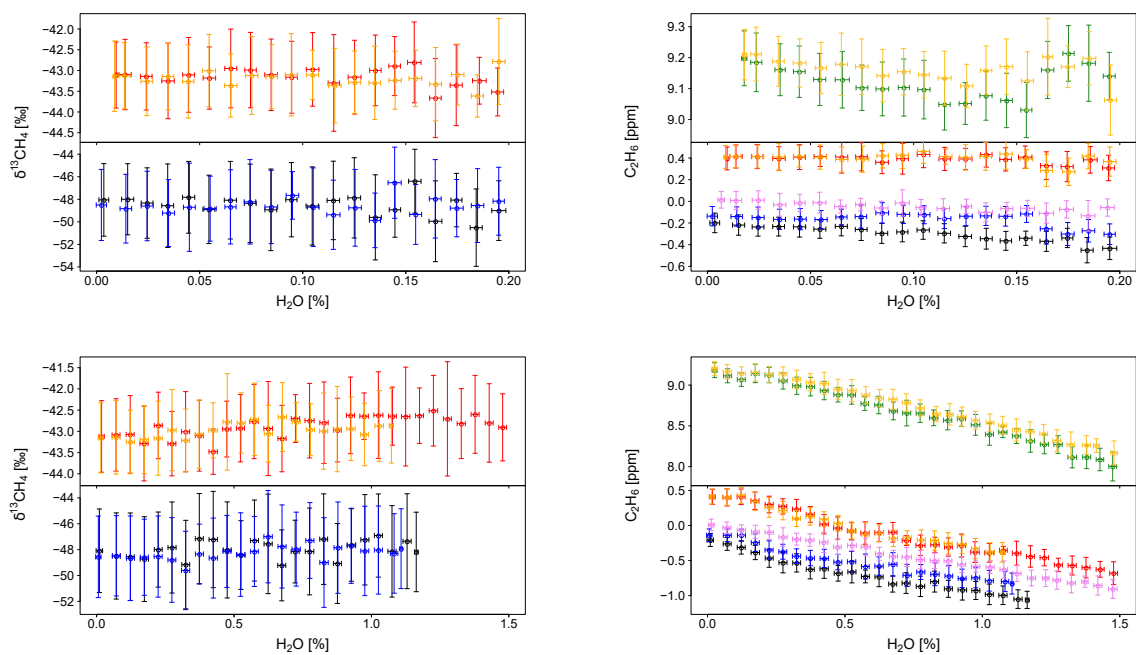


Figure S1. H₂O interference on $\delta^{13}\text{CH}_4$ and C₂H₆. Different colours indicate different tests and in part different gas cylinders used.

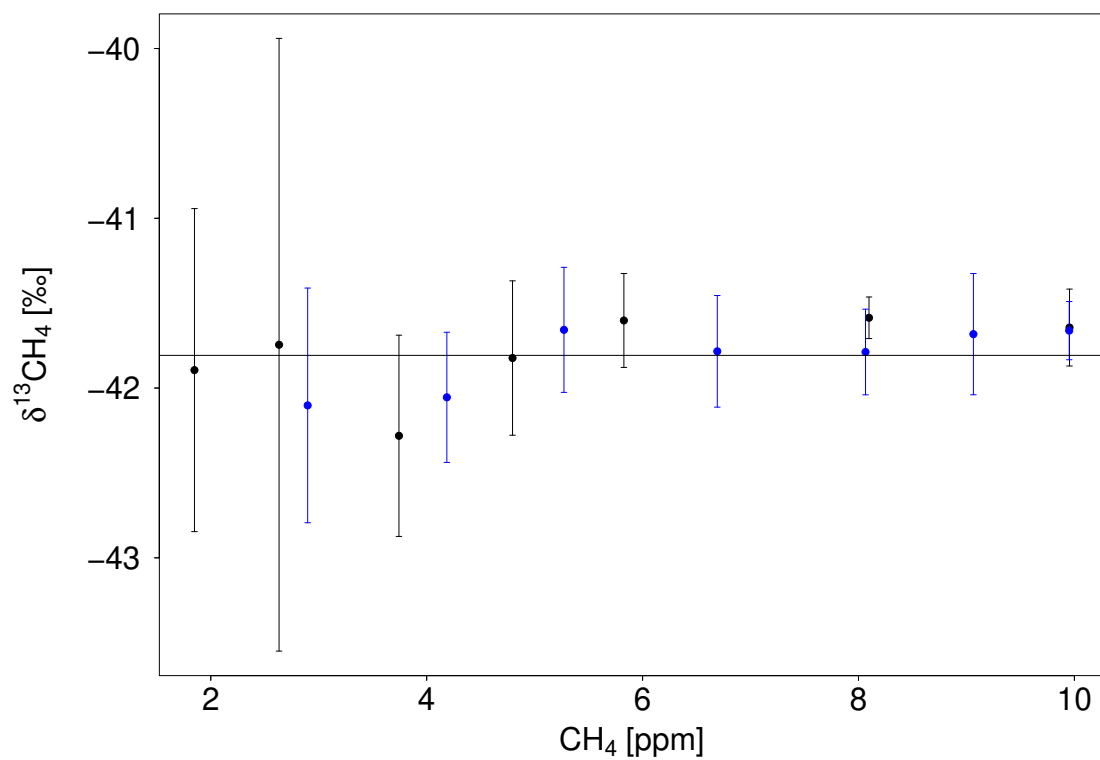


Figure S2. CH₄ interference on δ¹³CH₄. The points show the 15 min average measurement of different gas mixtures prepared with natural air (N₂, O₂ and Ar) and dry compressed air of 10ppm CH₄ (in N₂, O₂ and Ar). The same dilution test was done twice (blue and black points).

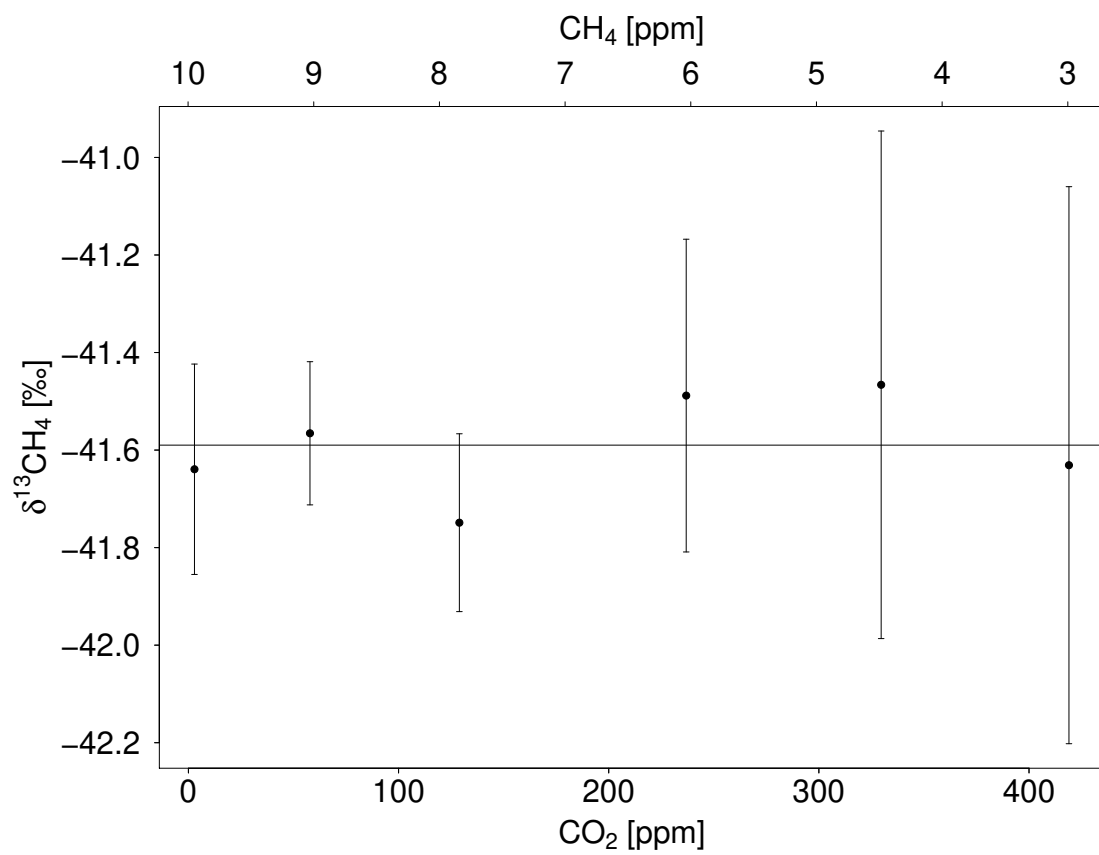


Figure S3. CO₂ interference on $\delta^{13}\text{CH}_4$. The points show the 15 min average measurement of different gas mixtures prepared by a dilution test with dry compressed air of 10 ppm CH₄ (in N₂, O₂ and Ar) and dry compressed air of 600 ppm CO₂ (in N₂, O₂ and Ar).

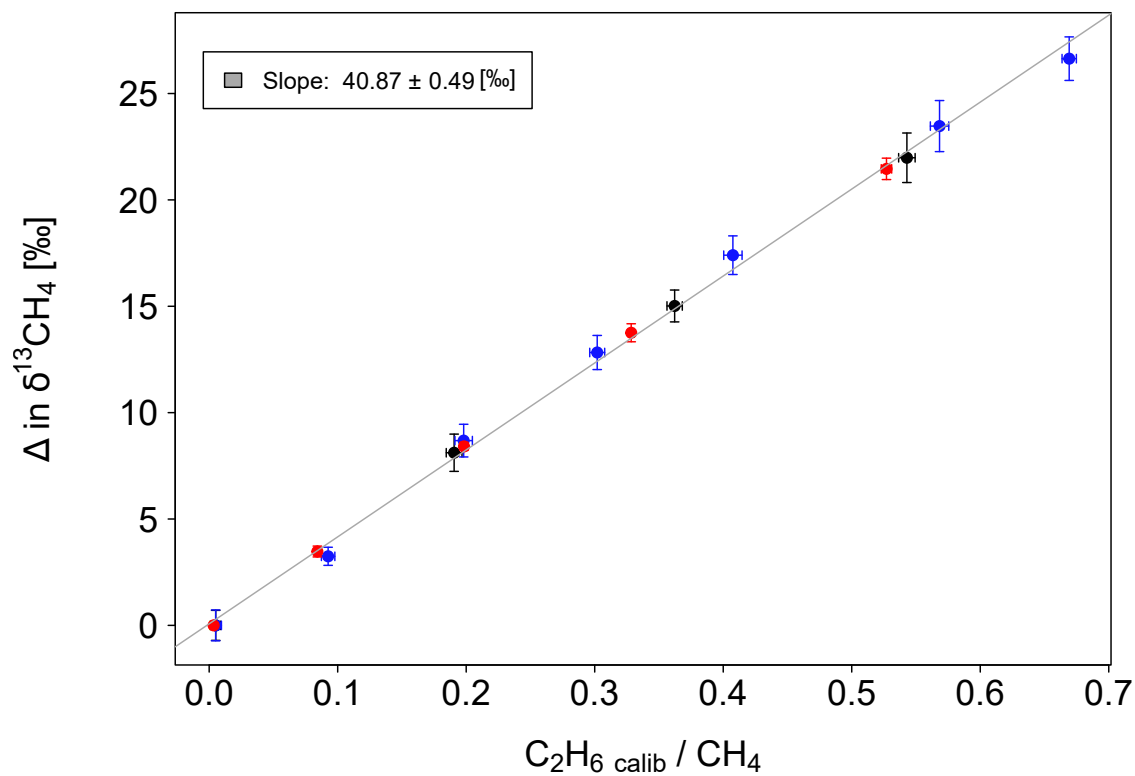


Figure S4. C_2H_6 interference on $\delta^{13}CH_4$. The points show the corrected and calibrated 15 min average of different gas mixtures prepared by three dilution test with dry compressed air of 5 ppm C_2H_6 (in N_2 , O_2 and Ar) and dry compressed air of 10 ppm CH_4 (in N_2 , O_2 and Ar, red) or atmospheric concentrations (black and blue).

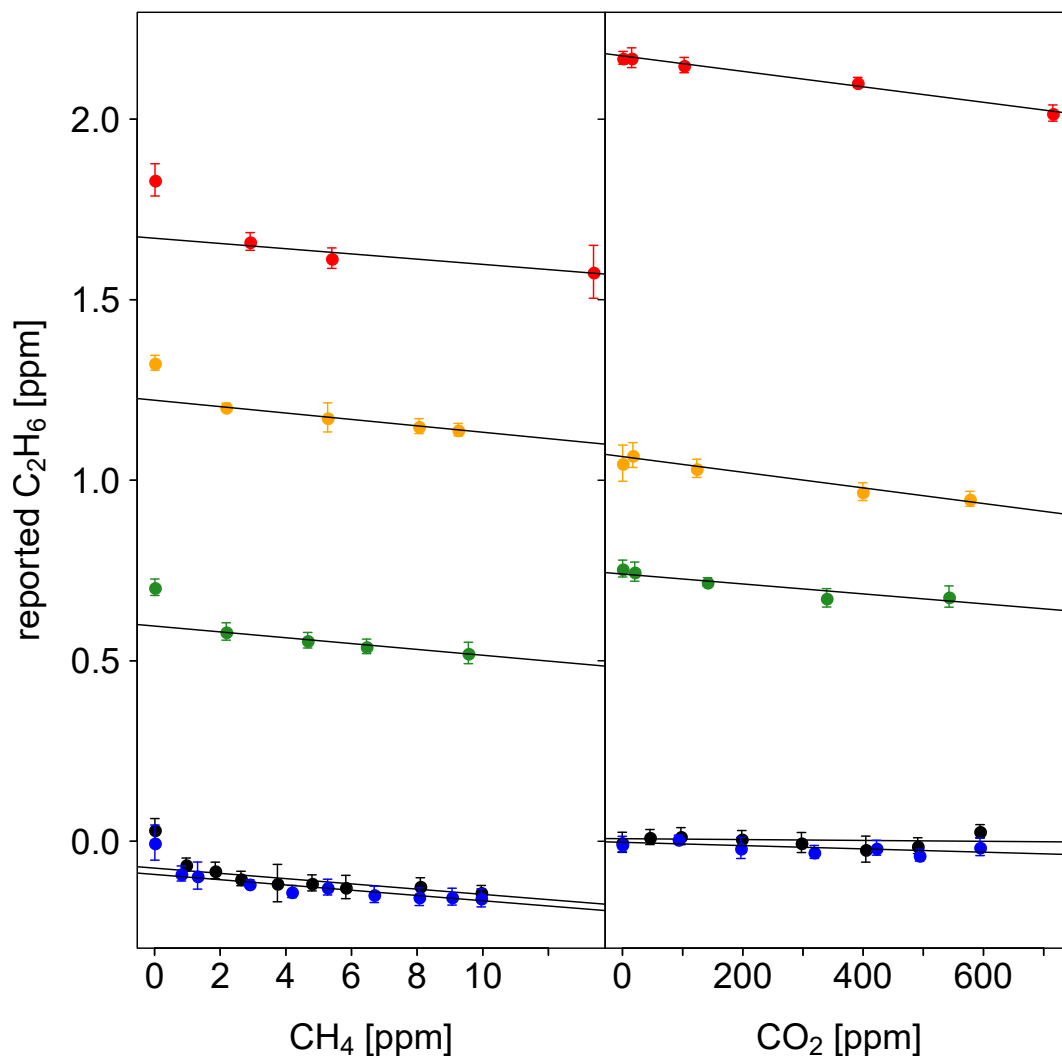


Figure S5. CH_4 and CO_2 interference on C_2H_6 . The points show the reported 10–15 min average of different gas mixture. The blue and black points show four dilution test with natural air (N_2 , O_2 and Ar) and dry compressed air of 10ppm CH_4 (in N_2 , O_2 and Ar, red) or 600ppm CO_2 (in N_2 , O_2 and Ar). The red, yellow and green measurements show injection tests at which different amounts of pure CH_4 or CO_2 were injected into three liter sample bags filled with natural air (N_2 , O_2 and Ar) and different amounts of C_2H_6 .

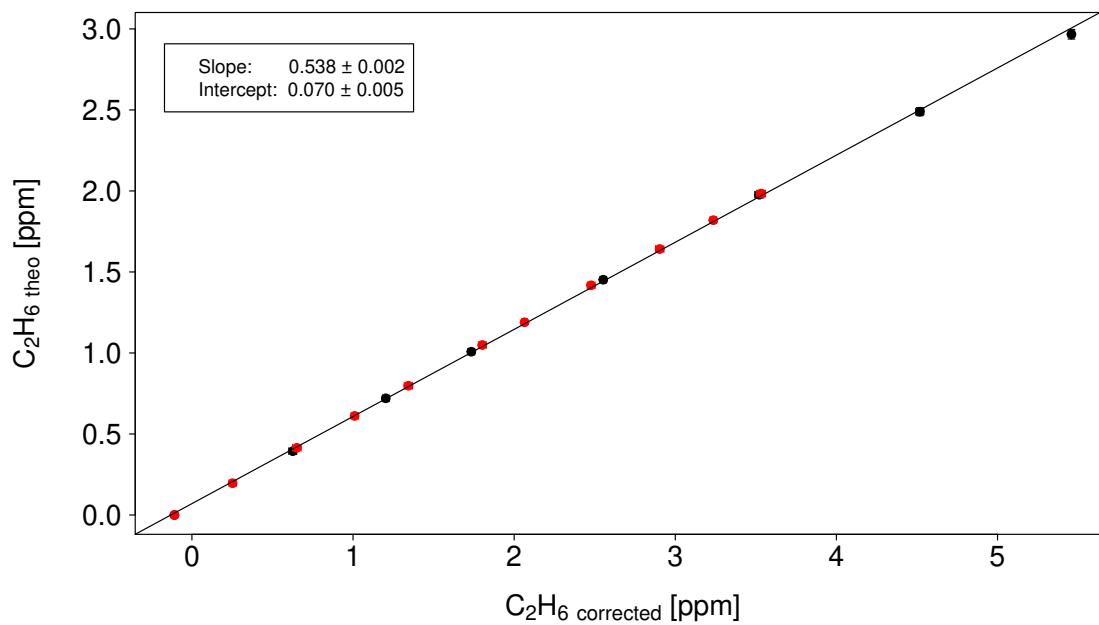


Figure S6. Linearity test of C_2H_6 . The points (black and red) show the corrected 10–15 min average of different gas mixture prepared by two dilution tests with dry compressed air of atmospheric concentrations and dry compressed air of 5 ppm C_2H_6 (in N_2 , O_2 and Ar). The theoretical C_2H_6 concentrations were calculated using the measured CH_4 and CO_2 concentrations in the gas mixture and the known CO_2 , CH_4 and C_2H_6 concentrations of the used gas cylinders.

Table S1. $\delta^{13}\text{CH}_4$ signatures determined for each AirCore measurement.

location	date	$\delta^{13}\text{CH}_4$ [‰]	r^2	peak height above baseline
biogas plant				
Heidelberg	2016-08-29	-62.69 ± 1.05	0.939	2.59
	2016-09-08	-62.04 ± 0.20	0.999	9.45
	2016-09-08	-61.23 ± 0.60	0.994	4.85
	2016-09-28	-58.96 ± 0.57	0.992	8.15
	2016-09-28	-61.89 ± 0.32	0.997	7.39
	2016-09-28	-59.81 ± 1.03	0.959	2.34
	2016-10-10	-64.16 ± 0.44	0.996	7.34
	2016-10-10	-63.66 ± 1.06	0.992	3.77
	2016-11-30	-63.15 ± 0.58	0.995	6.70
	2016-11-30	-63.11 ± 0.97	0.993	3.76
	2016-11-30	-63.46 ± 0.74	0.993	4.44
	2016-12-19	-61.99 ± 3.25	0.932	1.27
	2016-12-19	-62.11 ± 1.33	0.984	2.55
	2017-02-22	-67.43 ± 1.26	0.995	4.02
	2017-02-22	-63.58 ± 0.84	0.987	3.64
	2017-02-22	-60.85 ± 0.95	0.981	2.85
	2017-02-22	-61.12 ± 1.63	0.965	3.55
dairy farm				
Weinheim (on farm)	2016-10-26	-64.92 ± 0.71	0.994	6.32
	2016-10-26	-62.62 ± 0.52	0.996	6.67
	2016-11-21	-65.99 ± 0.98	0.950	5.28
Weinheim (plume with biogas plant)	2016-09-29	-62.58 ± 2.08	0.936	1.61
	2016-09-29	-60.16 ± 2.09	0.970	2.09
	2016-09-29	-59.59 ± 1.59	0.965	2.44
	2016-10-26	-56.58 ± 1.20	0.972	2.95
	2016-10-26	-59.66 ± 0.14	0.999	10.91
	2016-11-21	-60.43 ± 0.85	0.990	4.08
	2016-12-14	-47.17 ± 0.25	0.998	10.83
	2016-12-14	-43.13 ± 1.15	0.986	4.19
	2017-02-23	-47.18 ± 2.82	0.950	1.90
	2017-02-23	-43.64 ± 1.55	0.988	3.57
Ladenburg (on farm)	2016-10-26	-64.00 ± 2.63	0.981	1.97
	2016-10-26	-61.56 ± 2.51	0.955	1.56
	2016-10-26	-63.93 ± 0.88	0.990	4.69
Ladenburg (plume with biogas plant)	2016-11-30	-40.30 ± 0.42	0.986	5.95
	2016-11-30	-40.36 ± 0.59	0.974	5.45
	2016-11-30	-41.77 ± 0.93	0.968	5.09
	2016-11-30	-55.08 ± 1.48	0.718	1.74
Kleve (organic farming)	2017-03-24	-63.77 ± 0.42	0.997	8.45
	2017-03-24	-65.11 ± 1.75	0.979	2.86
Kleve (conventional farming)	2017-03-24	-65.37 ± 0.42	0.998	8.04
	2017-03-24	-63.30 ± 0.18	0.998	11.20
Kleve (plume)	2017-03-24	-61.65 ± 1.67	0.976	2.70

Table S1. $\delta^{13}\text{CH}_4$ signatures determined for each AirCore measurement.

location	date	$\delta^{13}\text{CH}_4$ [‰]	r^2	peak height above baseline
landfill				
Sinsheim (plume)	2016-08-29	-54.16 ± 4.45	0.470	0.47
	2016-09-08	-62.19 ± 4.36	0.582	0.54
	2016-11-02	-59.56 ± 4.99	0.498	0.46
Sinsheim (on landfill)	2016-11-30	-58.96 ± 4.63	0.523	0.50
	2017-07-18	-59.12 ± 1.14	0.992	4.86
	2017-07-18	-59.87 ± 2.80	0.947	1.77
	2016-07-25	-64.86 ± 0.97	0.987	3.42
	2016-07-25	-67.68 ± 2.86	0.914	0.93
	2016-07-25	-69.30 ± 2.99	0.850	0.94
	2016-07-25	-63.99 ± 4.64	0.606	0.47
WWTP				
Heidelberg	2016-10-10	-50.80 ± 2.28	0.935	1.65
	2016-10-26	-51.17 ± 3.97	0.823	1.29
	2016-10-26	-56.34 ± 1.20	0.988	3.85
	2016-12-14	-51.97 ± 1.41	0.977	3.28
	2016-12-19	-54.21 ± 2.31	0.960	1.75
	2017-02-22	-54.22 ± 2.41	0.930	2.04
	2017-02-22	-49.40 ± 2.78	0.837	1.63
natural gas facilities				
Sandhausen	2016-11-02	-42.14 ± 0.59	0.994	7.58
	2016-11-02	-41.50 ± 1.00	0.967	3.05
	2017-03-09	-49.16 ± 4.58	0.810	1.00
Hähnlein/Gernsheim	2016-09-29	-41.14 ± 1.40	0.980	2.87
	2016-10-26	-57.45 ± 2.69	0.922	1.31
	2016-11-21	-51.04 ± 4.00	0.841	1.20
	2016-11-21	-47.60 ± 3.67	0.938	1.63
	2016-11-21	-44.49 ± 1.69	0.957	2.86
	2016-11-21	-47.35 ± 2.95	0.894	1.74
	2016-11-21	-51.00 ± 1.03	0.994	5.49
2016-12-14	-45.11 ± 1.70	0.973	2.97	
2017-02-23	-41.11 ± 3.08	0.851	1.38	
bituminous deep coal mine				
Bottrop (active)	2017-03-25	-59.53 ± 2.18	0.947	1.35
	2017-03-25	-54.73 ± 2.28	0.928	1.46
	2017-03-25	-55.04 ± 1.25	0.972	2.29
	2017-03-25	-54.86 ± 0.51	0.996	5.52
Bottrop (closed)	2017-03-25	-49.97 ± 6.33	0.677	0.55