

Supplementary material to the paper: Ten years of
MIPAS measurements with ESA Level 2 processor V6 -
Part I: retrieval algorithm and diagnostics of the products

P. Raspollini, B. Carli, M. Carlotti, S. Ceccherini, A. Dehn, B. M. Dinelli,
A. Dudhia, J. M. Flaud, M. López-Puertas, F. Niro, J. J. Remedios, M. Ridolfi,
H. Sembhi, L. Sgheri, T. von Clarmann

This document contains some figures that complete the information provided in the paper. In particular, Figs 4 and 5 of the paper, showing respectively Ozone and Methane percent random and systematic error profiles for the reference atmospheres for both FR and OR measurements, and Fig. 8 of the paper, showing the Ozone Averaging Kernels for two representative scans from FR and OR measurements, are here repeated for the other species retrieved by the ESA processor ML2PP V6.

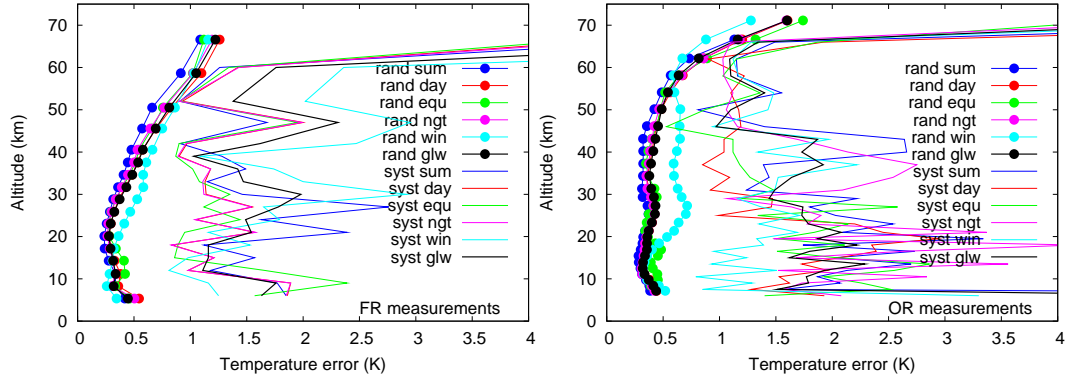


Figure 1: Percent random and systematic errors of temperature profile retrieved from FR (left plot) and OR (right plot) measurements. For the description of the reference atmospheres for which random and systematic errors are provided refer to Fig. 4 of the paper.

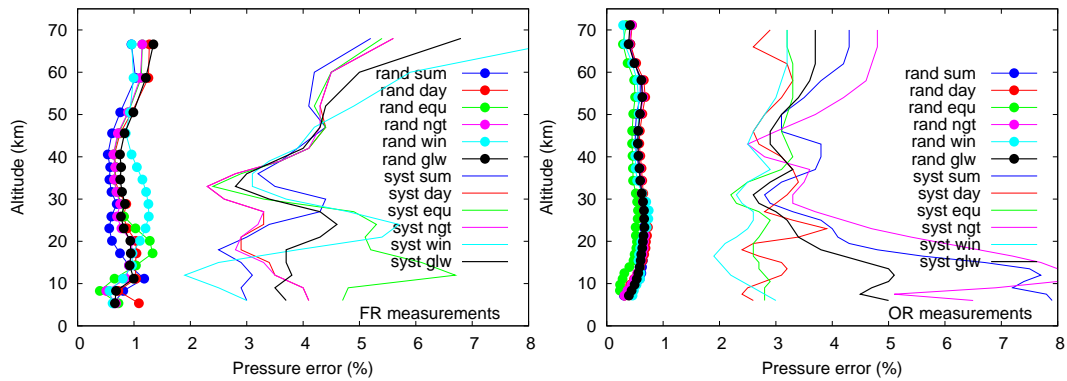


Figure 2: Same as Fig.1, but for pressure.

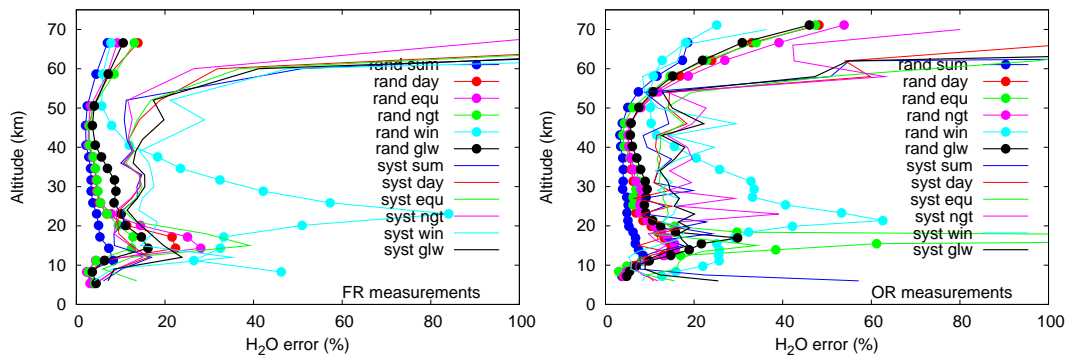


Figure 3: Same as Fig.1, but for H₂O.

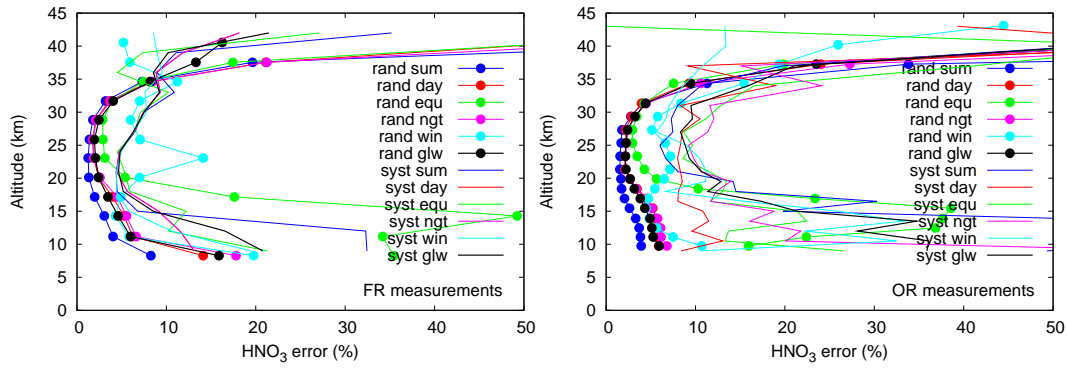


Figure 4: Same as Fig.1, but for HNO₃.

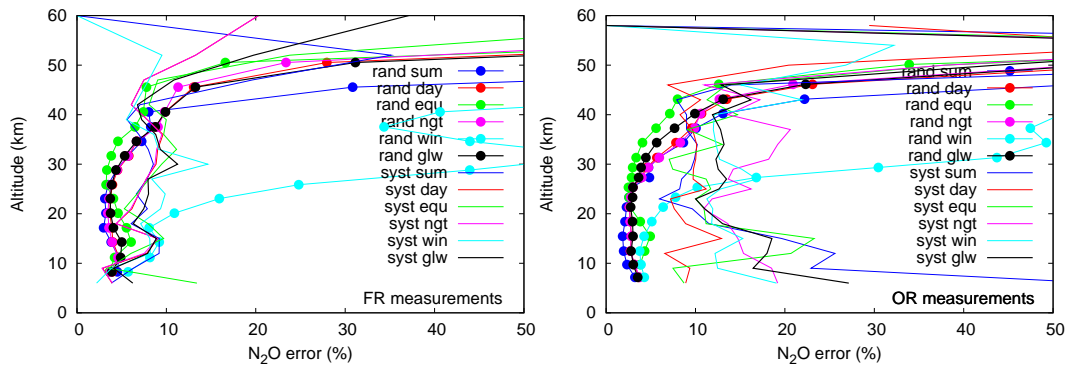


Figure 5: Same as Fig.1, but for N₂O.

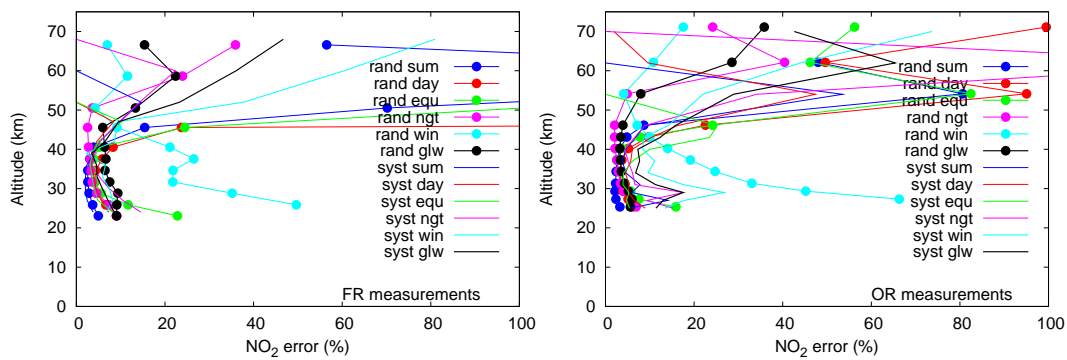


Figure 6: Same as Fig.1, but for NO₂.

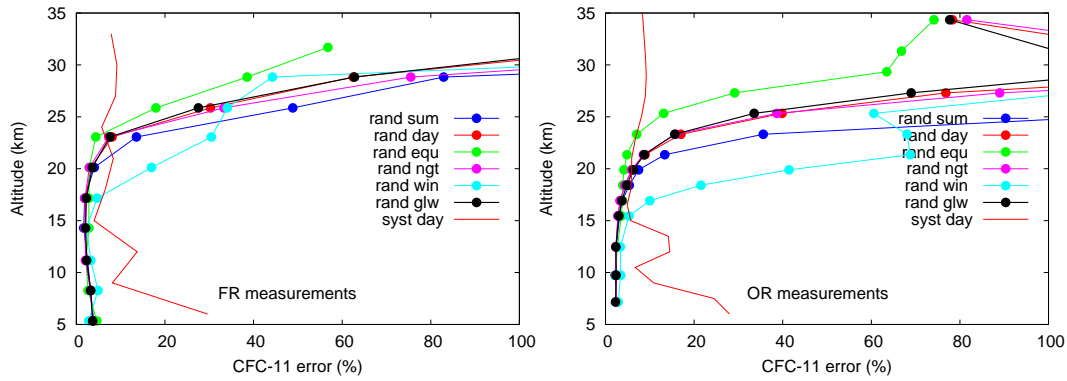


Figure 7: Same as Fig.1, but for CFC-11.

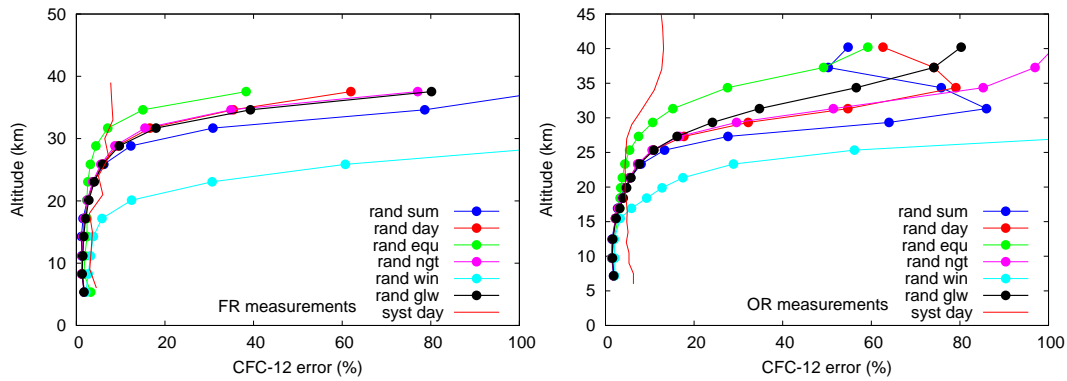


Figure 8: Same as Fig.1, but for CFC-12.

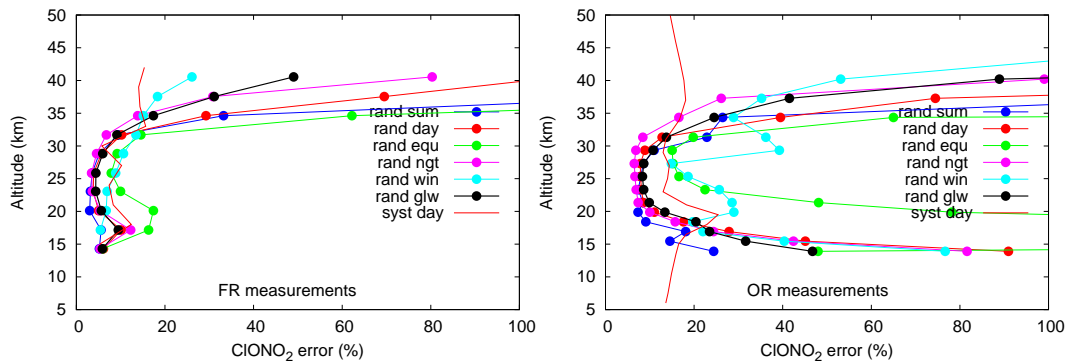


Figure 9: Same as Fig.1, but for ClONO₂.

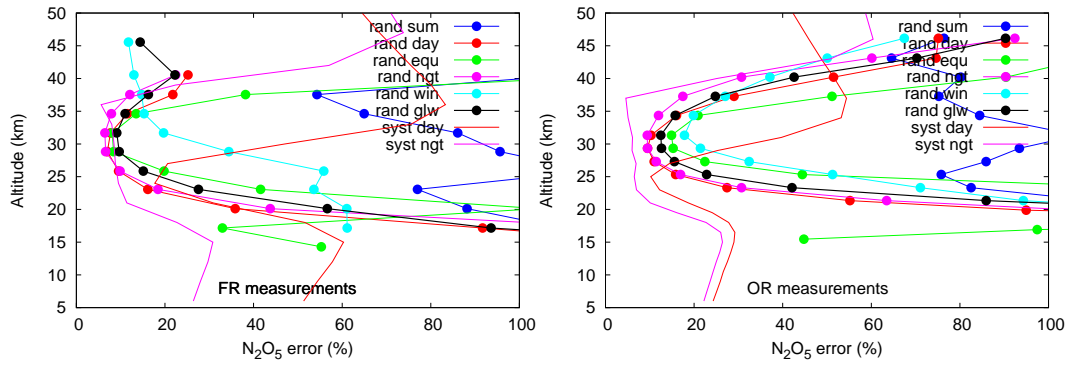


Figure 10: Same as Fig.1, but for N₂O₅.

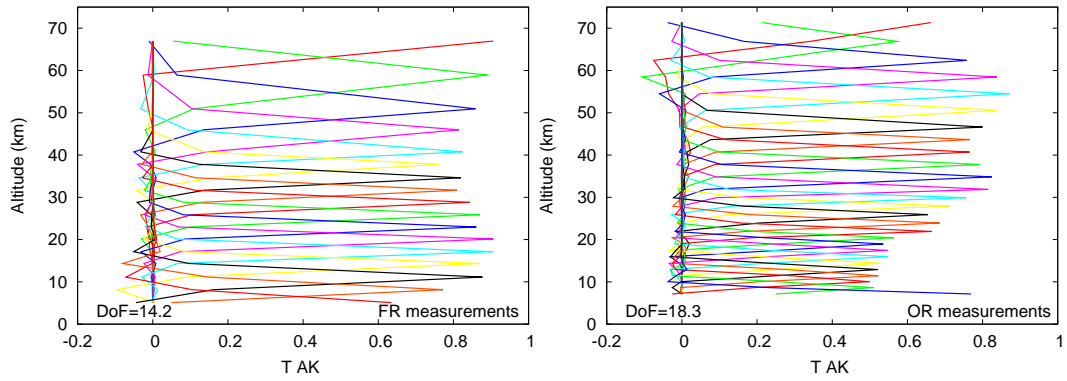


Figure 11: Temperature Averaging Kernels for two representative scans of FR (left plot) and OR (right plot) measurements

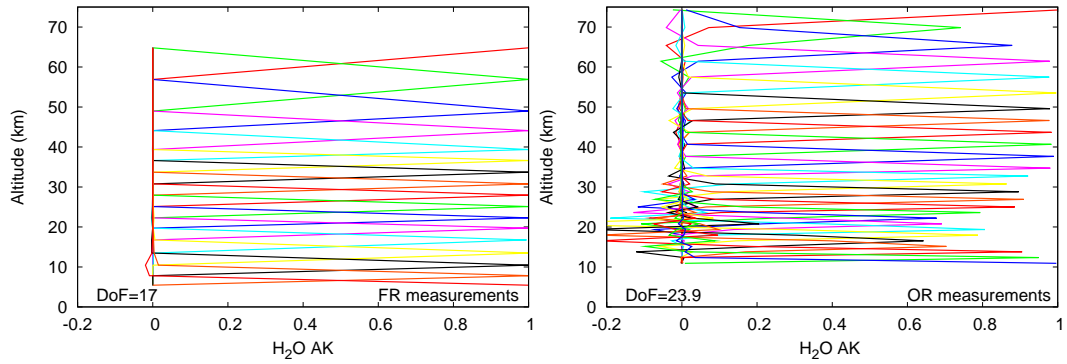


Figure 12: Same as Fig.11, but for H₂O.

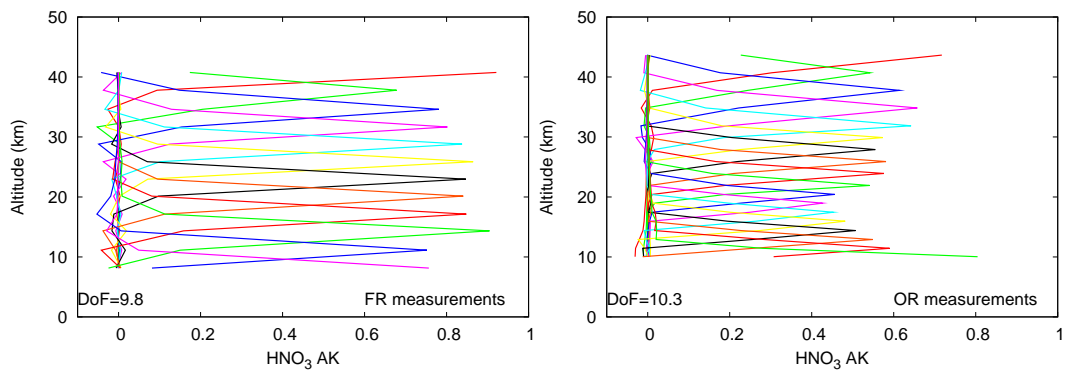


Figure 13: Same as Fig.11, but for HNO₃.

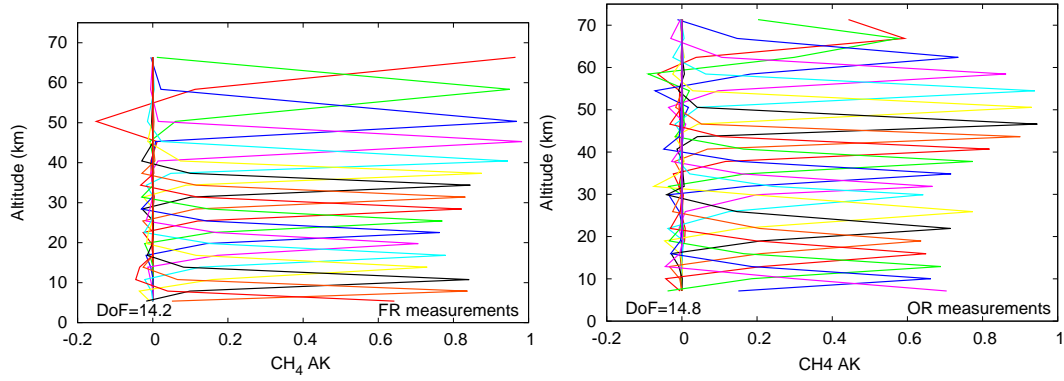


Figure 14: Same as Fig.11, but for CH₄.

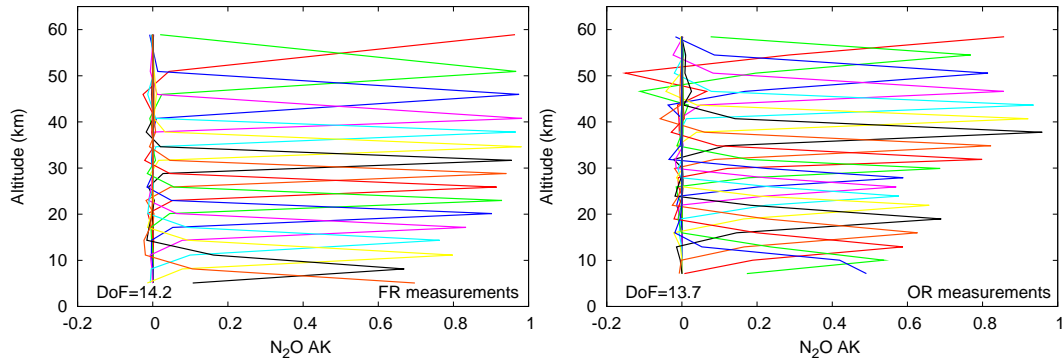


Figure 15: Same as Fig.11, but for N₂O.

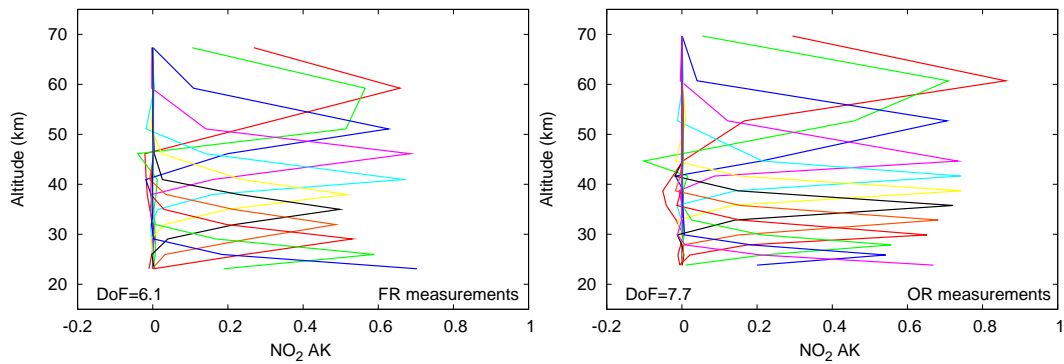


Figure 16: Same as Fig.11, but for NO₂.

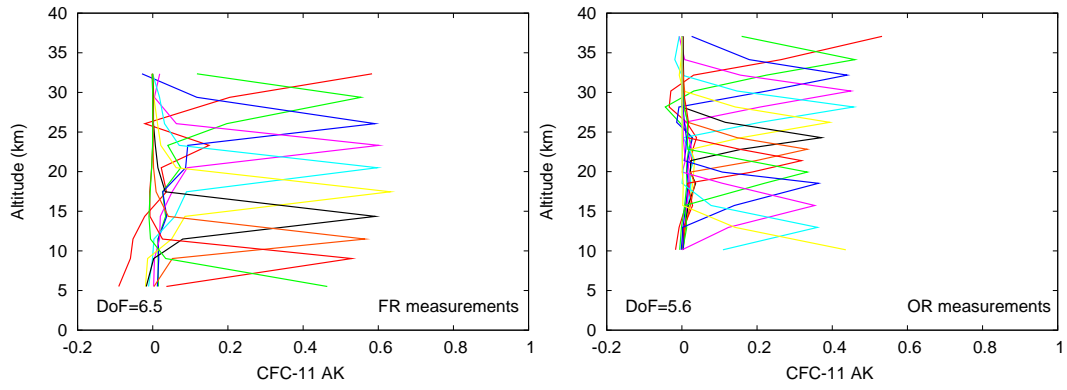


Figure 17: Same as Fig.11, but for CFC-11.

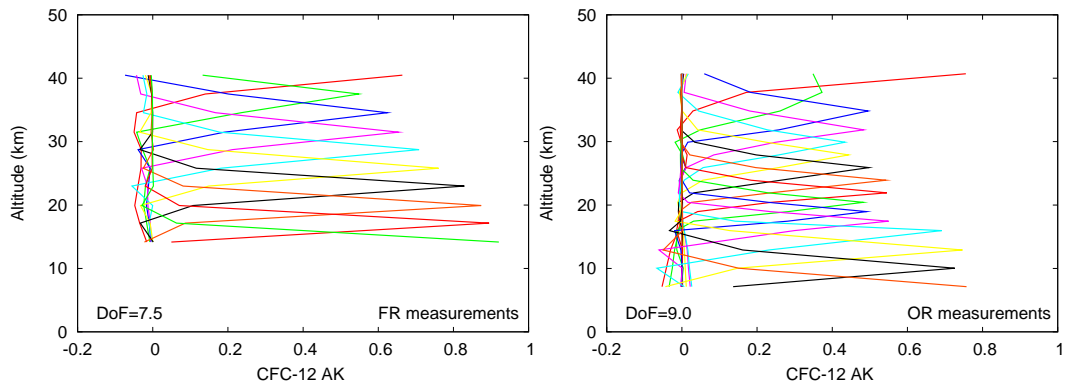


Figure 18: Same as Fig.11, but for CFC-12.

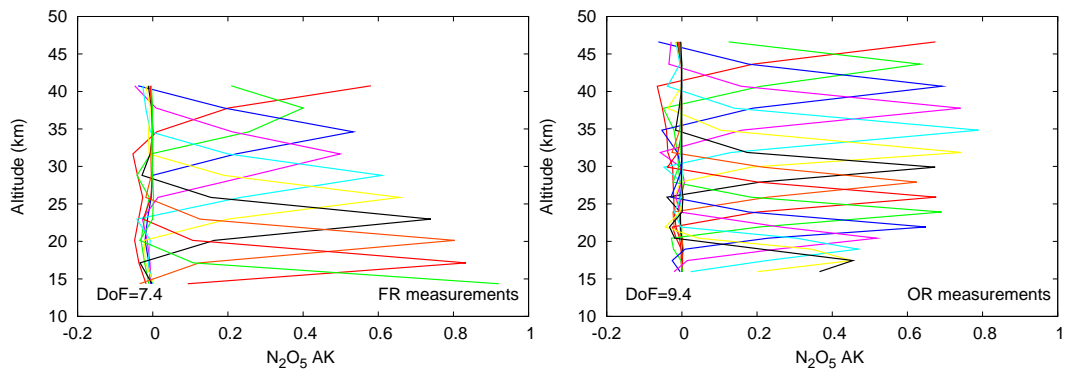


Figure 19: Same as Fig.11, but for N_2O_5 .

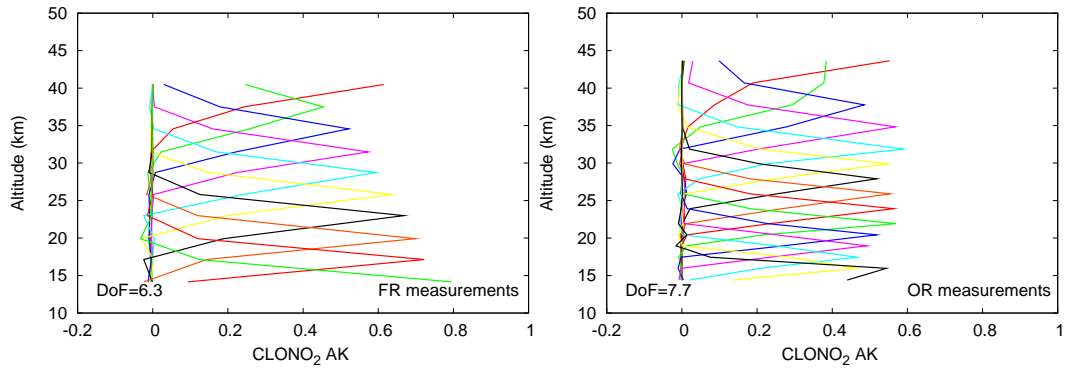


Figure 20: Same as Fig.11, but for CLONO₂.